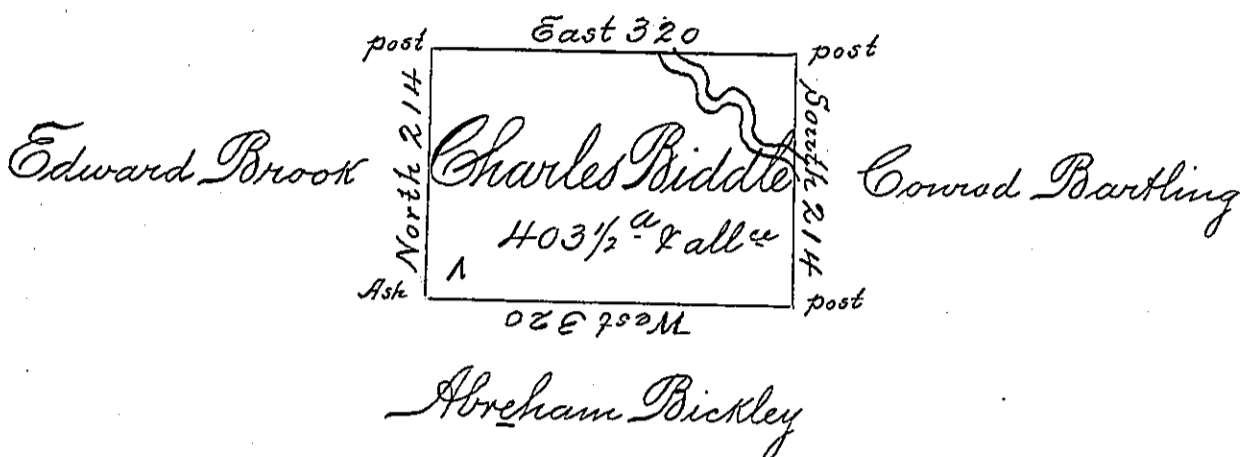


Clement Biddle



Situate on the Waters of Lake Erie in Allegany
County Survey'd the 16th Sept^r 1795 to Charles
Biddle on his Warrant dated the 30th of May 1792
Containing Four hundred three & half acres & allow^d
Thos. Rees D.S.

Dan^l Brodhead Esquire }
Surveyor Gen^l }

IN TESTIMONY that the above is a copy of the original remaining on file in
the Department of Internal Affairs of Pennsylvania, made
conformably to an Act of Assembly approved the 16th day of
February, 1833, I have hereunto set my Hand and caused
the Seal of said Department to be affixed at Harrisburg,
this fourth day of June 1901.

James W. Fatta
Secretary of Internal Affairs.